

# ***Australian National Bridge Championships***

**ANC**



**2007**

***Friday 6 July 2007 - Saturday 21 July 2007***

***Esplanade Hotel  
46 Marine Terrace, Fremantle, WA***

***conducted by***

***Bridge Association of WA***

***on behalf of***

***Australian Bridge Federation Incorporated***



ABN 70 053 651 666



ABN 82 057 199 126

# GENERAL INFORMATION

**Convenor:** Allison Stralow

**ANC 2007 Committee:**

Secretary: John Beddow  
Treasurer: Pepe Schwegler  
Tournament Manager: Jonathan Free  
Publicity: Noelene Law  
Sponsorship: Linda Bedford-Brown  
Hospitality: Carol & Derek Pocock, Mike & Helen George  
Special Events: Jenny Elphick  
Property: Phil Tearne  
Webmaster: Nigel Dutton  
Bulletin: Noelene Law - outlaw2@iinet.net.au  
Linda Bedford-Brown - bedfords@bigpond.net.au

**Contact Details:** Email: bawaxo@q-net.net.au  
Mail: The Convenor, PO Box 503, NEDLANDS 6909  
Phone: 0421 994 293 (J Beddow) or 0403 153 823 (A Stralow)  
Website: [www.bawa.asn.au](http://www.bawa.asn.au)

**Transport:** Free CAT bus around Fremantle - see Hospitality Desk for other transport information.

**Accommodation:** Refer to BAWA website: [www.bawa.asn.au](http://www.bawa.asn.au)  
[www.esplanadehotelfremantle.com.au](http://www.esplanadehotelfremantle.com.au)  
[www.harbourvillage.property.questwa.com.au](http://www.harbourvillage.property.questwa.com.au)  
[www.tradewindshotel.com.au](http://www.tradewindshotel.com.au)  
[www.goodearthhotel.com.au](http://www.goodearthhotel.com.au)  
[www.cottesloewaters.com](http://www.cottesloewaters.com)

**Map of Fremantle:** Refer to the BAWA website: [www.bawa.asn.au](http://www.bawa.asn.au)

**Parking:** Collect a discount voucher from the Hospitality Desk daily for a special rate of \$10 per day at the Collie St Car Park. Parking across the road from the Esplanade Hotel is \$6 per day.

**Restaurants:** See Hospitality Desk for restaurants & menus.

**Smoking:** Smoking is only permitted outside the hotel around the corners to the left or right of the front door.

## What to look forward to.....

**NEW EVENT:** Seniors' Butler is now a 3 stage event – refer to program for dates & times.

**WELCOME TEAMS:** Sunday 15<sup>th</sup> July, morning & afternoon only – an opportunity to play against state representatives. A great warm up for State teams in which no State team will play another in the same category.

**BRIDGE IN THE VALLEY:** Refer page 8 for details of this fantastic day out on the river.

- 3 congress events daily
- Fabulous prizes
- Range of restaurants nearby
- Convenient parking
- Shopping at your door
- Hospitality galore
- Vugraph
- Free CAT bus around Fremantle
- Historical Fremantle walks
- Victory Dinner/Dance

## ANC 2007 CONDITIONS OF CONTEST

Persons applying to enter the ANC should be aware of the following:

### 1. Sponsoring Organisations

- ◆ Championship events, Australian Bridge Federation
- ◆ Congress events, Bridge Association of Western Australia.

The sponsoring organisations reserve the right to refuse any entry which includes a person who does not qualify under the Conditions of Contest or who is in bad standing with any registered bridge club or association.

### 2. Regulations and Supplementary Regulations

- ◆ Championship, ABF, see [www.abf.com.au](http://www.abf.com.au)
- ◆ Congress, BAWA, see [www.bawa.asn.au](http://www.bawa.asn.au)

### 3. Master Points

Gold master points are awarded for all ANC Championship events. (all stages of the ABPC {Butlers}, ANC Swiss Pairs, ANC Restricted Butler, ANC Pairs, ANC Teams.

### 4. Playoff Qualifying Points

PQP are awarded according to ABF Regulations to players who have attested their eligibility and who place in the first six eligible pairs in the Open, Women's and Seniors' ABPC and all entrants in the Interstate Teams (with additional awards for 1<sup>st</sup> and 2<sup>nd</sup>). Although some Playoff information is published in the ABF Newsletter, detailed information is available only at [www.abf.com.au](http://www.abf.com.au). It is mailed only on written request.

### 5. System Disclosure

- ◆ ANC Championship: provide opponents with two identical standard system cards at the table.
- ◆ Congress: Highly artificial (Yellow) systems may be played in matches or rounds of 8 or more boards **IF** advance notice is given. Users of Yellow Systems & Brown Sticker Conventions must make available to opponents an approved written defence.
- ◆ Yellow systems: Pairs wishing to use a YELLOW system in the ABPC Stage 2 or 3 must submit a concise summary, printed or written in black ink on an ABF Standard system card or WBF system card plus a maximum of two supplementary A4 sheets, and a *bona fide* suggested defence, to the Chief Tournament Director before 5.30pm on Sunday 8<sup>th</sup> July 2007.

### 6. Entry Conditions

- ◆ Australian resident players must be current financial members of the ABF Masterpoint Scheme
- ◆ Players born after 31/12/81 are entitled to a rebate of 50% of their entry fee.

### 7. Entry to the ABPC, ANC Swiss Pairs and ANC Restricted Butler

- ◆ Eligible pairs include one player eligible to represent Australia; ineligible pairs have neither player eligible to represent Australia
- ◆ Entry to the ABPC Stage 1 is unrestricted.
- ◆ Entry to the ABPC Stage 2 is unrestricted for eligible pairs but restricted to the best six ineligible pairs.
- ◆ Entry to the ABPC Stage 3 is unrestricted for eligible pairs but restricted to the best four ineligible pairs.
- ◆ Entrants to the Senior ABPC must be born before 1 Jan 1950.
- ◆ Entry to the ANC Swiss Pairs is unrestricted.
- ◆ Entry to the ANC Restricted Butler is restricted to players with less than 300 master points at 30<sup>th</sup> June 2007 who are not eligible to represent another National Bridge Organisation.

### 8. Session Times

All session times are provisional and may be altered at the discretion of the Convenor. Players should check session times at the venue.

### 9. General behaviour

All players and spectators are expected to be neat and tidy at all times in the venue. BAWA Tournament and Discipline regulations apply.

### 10. Mobile Phones, Pagers or other electronic equipment

Active mobile phones, pagers or other electronic equipment are prohibited in the playing area during session time.

# PROGRAM

**NB: All session times are provisional and may be altered at the discretion of the Convenor.  
Players should check session times at the venue.**

Day/Date	CHAMPIONSHIP EVENTS	CONGRESS EVENTS		
		Morning 10.00 am	Afternoon 2.00 pm	Evening 7.30 pm
Friday 6 July	Butler Stage 1: Open, Women's, Seniors' 7.30 pm			The Bridge Game Shop Welcome Pairs
Saturday 7 July	Butler Stage 1: Open, Women's, Seniors' 10.15 am 2.15 pm 7.30 pm	Bedford-Brown Bed & Breakfast Pairs	Bunbury BC Pairs	Lindy Rosenwax Pairs
Sunday 8 July	Butler Stage 1: Open, Women's, Seniors' 10.15 am 2.15 pm Butler Stage 2: Open, Women's Senior's 7.30 pm	Chalice Bridge Wines Swiss Teams <b>1 of 2</b>	Spookwood Wines Swiss Teams <b>2 of 2</b>	Kailis Group Pairs
Monday 9 July	Butler Stage 2: Open, Women's, Seniors' 10.15 am 2.15 pm 7.30 pm	<b>BRIDGE IN THE VALLEY - Cancelled</b> Printforce Pairs <b>1 of 2</b>	BRIDGE IN THE VALLEY Printforce Pairs <b>2 of 2</b>	Pairs sponsored by John Hughes
Tuesday 10 July	Butler Stage 2: Open, Women's, Seniors' 10.15am 2.15pm	Esplanade Hotel Pairs	South Perth BC Pairs	Ricoh Swiss Teams <b>1 of 3</b>
Wednesda y 11 July	Butler Stage 3: Open, Women's, Seniors' 10.15 am 2.15 pm	ANC Swiss Pairs <b>1 of 6</b> ANC Restricted Butler <b>1 of 4</b> Walk-in Pairs	ANC Swiss Pairs <b>2 of 6</b> ANC Restricted Butler <b>2 of 4</b> Walk-in Pairs	Ricoh Swiss Teams <b>2 of 3</b>  Walk-in Pairs
Thursday 12 July	Butler Stage 3: Open, Women's, Seniors' 10.15 am 2.15 pm	ANC Swiss Pairs <b>3 of 6</b> ANC Restricted Butler <b>3 of 4</b> Walk-in Pairs	ANC Swiss Pairs <b>4 of 6</b> ANC Restricted Butler <b>4 of 4</b> Dog Aid International Pairs	Ricoh Swiss Teams <b>3 of 3</b>  Walk-in Pairs
Friday 13 July	Butler Stage 3: Open, Women's, Seniors' 10.15 am 2.15 pm  <b>Butler Presentation 7.00 pm</b>	ANC Swiss Pairs <b>5 of 6</b>  McDonald Pynt Pairs	ANC Swiss Pairs <b>6 of 6</b> Under 150 MP Pairs Walk-in Pairs	Margery Kerr Memorial Imp Pairs <b>1 of 2</b> <i>Players may play one or both sessions</i>
Saturday 14 July	ANC Pairs Open, Women's, Seniors', Youth, Mixed 10.30 am 2.45 pm	Uforic Jewels Pairs Directors' Course	Clements Manford Pairs	Margery Kerr Memorial Imp Pairs <b>2 of 2</b> <i>Players may play one or both sessions</i>
Sunday 15 July	<b>Captain's Meeting 5.55 for 6.00 pm</b> <b>ANC Representatives Welcome 7.00pm</b>	<b>ANC WELCOME TEAMS</b> <b>1 of 2 10.30 am</b>	<b>ANC WELCOME TEAMS</b> <b>2 of 2 2.30 pm</b>	WABC Pairs
Monday 16 July	ANC Teams Open, Women's, Seniors', Youth 10.30 am 2.45 pm 8.00 pm (VG)	Lindy Rosenwax Pairs	WABC Pairs	Roberts O'Hara Pairs
Tuesday 17 July	ANC Teams 10.30 am 2.45 pm 8.00 pm (VG)	Melville City & Melville BC Swiss Pairs <b>1 of 2</b>	Melville City & Melville BC Swiss Pairs <b>2 of 2</b>	Lim Pairs
Wednesda y 18 July	ANC Teams 10.30 am 2.45 pm 8.00 pm (VG)	Rejuvenating Facial Eyes Pairs	Undercroft BC Pairs	Reg Hall's Racket World Swiss Teams <b>1 of 2</b>
Thursday 19 July	ANC Teams 10.30 am 2.45 pm 8.00 pm (VG)	Maccabi BC Pairs	Nedlands BC Pairs	Les Calcraft BAWA Youth Swiss Teams <b>2 of 2</b>
Friday 20 July	ANC Teams 10.30 am 2.30 pm ANC Teams Finals 7.30 pm (VG)	West Coast BC Pairs	Steele Bishop Security Systems Pairs	Young Paterson Last Gasp Pairs
Saturday 21 July	ANC Teams Finals 10.00 am 1.30 pm	Auditorium Vugraph Presentation (Free Entry) Lindy Rosenwax Farewell Pairs	Auditorium Vugraph Presentation (Free Entry)	<b>Victory Dinner/Dance 7.00 pm</b>

**ANC Event/Function Entry Form**  
**Only ONE entry form per pair (please PRINT)**

Name: \_\_\_\_\_ ABF No. \_\_\_\_\_

Address: \_\_\_\_\_

Email: \_\_\_\_\_ Phone No: \_\_\_\_\_

Master Point holding at 30<sup>th</sup> June 2007 if entering Restricted Butler Pairs: \_\_\_\_\_

EVENT	PARTNER	ABF NO	\$
Butler Stage 1 Open, Women's Seniors' \$150 per pair			
	Please indicate whether available for Stage 2 <input type="checkbox"/>	<b>O W S</b> <i>Circle option</i>	
ANC Restricted Butler Pairs \$100 per pair			
	Partner's MP holding:	Open to players with 0-300 MP at 30/6/07	
Bridge in the Valley \$80 per person Refer Page 8 <b>Entries close 2<sup>nd</sup> July</b>	No. departing Esplanade Hotel	No. of players	
	No. departing Barrack St Jetty	No. of non-players	
Welcome Cocktail Party \$25 per person		No. attending	
Victory Dinner/Dance \$85 per person		No. attending	
		<b>TOTAL</b>	

Butler entries close Monday 2<sup>nd</sup> July 2007 & **must** be accompanied by payment. Late entries may be accepted at the Director's discretion. Please send congress pre-registration with this form.

**PLEASE MAKE CHEQUES PAYABLE TO "BAWA ANC 2007"**  
**MAIL TO: THE CONVENOR, PO BOX 503, NEDLANDS 6909**

Entries may be made on photocopies of this form or online at [www.bawa.asn.au](http://www.bawa.asn.au).  
 No email entries will be accepted.  
 Please also complete the pre-registration form on the following page.

<p><b><i>Welcome Cocktail Party</i></b></p> <p><b><i>Sunday 15<sup>th</sup> July</i></b></p> <p><b><i>7:00 pm</i></b></p> <p><b><i>Esplanade Hotel</i></b></p> <p><b><i>ANC Opening Ceremony</i></b></p> <p><b><i>\$25 per person</i></b></p>	<p><b>VICTORY DINNER</b></p> <p><b><i>Saturday 21<sup>st</sup> July</i></b></p> <p><b><i>7.00 pm</i></b></p> <p><b><i>Southern Cross Gala Ballroom</i></b></p> <p><b><i>Esplanade Hotel</i></b></p> <p><b><i>Presentations</i></b></p> <p><b><i>&amp;</i></b></p> <p><b><i>Closing Ceremony</i></b></p> <p><b><i>\$85 per person</i></b></p> <p><b><i>(wining, dining, dancing, spot prizes)</i></b></p>
---	--

**CONGRESS PRE-REGISTRATION ONLY**  
**ENTRY FEES WILL BE COLLECTED AT THE TABLE**  
**PLEASE TICK YOUR SELECTED EVENTS BELOW AND RETURN THIS FORM TO:**  
**THE CONVENOR, PO BOX 503, NEDLANDS WA 6909**

<input type="checkbox"/> The Bridge Game Shop Welcome Pairs <input type="checkbox"/> Bedford-Brown B & B Pairs <input type="checkbox"/> Bunbury BC Pairs <input type="checkbox"/> Lindy Rosenwax Pairs (7 July) <input type="checkbox"/> Chalice Bridge/ Spookwood Wines Swiss Teams <input type="checkbox"/> Kailis Group Pairs <input type="checkbox"/> John Hughes Pairs <input type="checkbox"/> Esplanade Hotel Pairs <input type="checkbox"/> South Perth BC Pairs <input type="checkbox"/> Ricoh Swiss Teams <input type="checkbox"/> ANC Swiss Pairs <input type="checkbox"/> Margery Kerr Imp Pairs (13 July) <input type="checkbox"/> Margery Kerr Imp Pairs (14 July) <input type="checkbox"/> Margery Kerr Imp Pairs (2 sessions) <input type="checkbox"/> Uforic Jewels Pairs <input type="checkbox"/> Clements Manford Pairs	<input type="checkbox"/> ANC Welcome Teams <input type="checkbox"/> WABC Pairs (15 July) <input type="checkbox"/> Lindy Rosenwax Pairs (16 July) <input type="checkbox"/> WABC Pairs (16 July) <input type="checkbox"/> Roberts O'Hara Pairs <input type="checkbox"/> Melville City & Melville BC Swiss Pairs <input type="checkbox"/> Lim Pairs <input type="checkbox"/> Rejuvenating Facial Eyes Pairs <input type="checkbox"/> Undercroft BC Pairs <input type="checkbox"/> Reg Hall's Racket World / Les Calcraft BAWA Youth Swiss Teams <input type="checkbox"/> Maccabi BC Pairs <input type="checkbox"/> Nedlands BC Pairs <input type="checkbox"/> West Coast BC Pairs <input type="checkbox"/> Steele Bishop Security Systems Pairs <input type="checkbox"/> Young Paterson Last Gasp Pairs <input type="checkbox"/> Lindy Rosenwax Farewell Pairs
--	---

<b>EVENT</b>	<b>Fee per player</b>	
<b>Butler Pairs Stage 1</b>	<b>\$75</b>	<b>Must be paid by 2 July 2007</b>
Butler Pairs Stage 2	\$90	(
Butler Pairs Stage 3	\$90	(
ANC Restricted Butler Pairs	\$50	(These costs are for information
ANC Swiss Pairs	\$70	(only
Congress Events (per session)	\$15	(
Walk-ins	\$15	(
<b>Welcome Cocktail Party</b>	<b>\$25</b>	<b>Must be paid by 13 July 2007</b>
<b>Victory Dinner/Dance</b>	<b>\$85</b>	<b>Must be paid by 18 July 2007</b>
<b>Bridge in the Valley</b>	<b>\$80</b>	<b>Must be paid by 2 July 2007</b>
<b><u>SPECIAL OFFER FOR \$15 CONGRESS &amp; WALK-IN EVENTS</u></b>		
Book of 10 Congress Entries	<b>\$100</b>	<b>Save \$50! Books available at Hospitality Desk</b>

The most flexible colour printers

RICOH

Kimberley Marshall Document & Print Solution Specialist  
 Ricoh Business Centre Phone (08) 9262 9000 Fax (08) 9262 9010

# ANC



# 2007



**WELCOME TEAMS - \$120 per team**

**SUNDAY 15<sup>TH</sup> JULY** (2 sessions - 10.30 am & 2.45 pm)

**AN OPPORTUNITY TO PLAY AGAINST STATE REPRESENTATIVES**

**NO STATE TEAM WILL PLAY ANOTHER TEAM IN THE SAME CATEGORY**

**GREAT WARM-UP FOR YOUR STATE TEAMS!!**

***REGISTER YOUR INTEREST NOW***

***Online or on the entry form available in the ANC 2007 brochure***



***ANC SENIORS' BUTLER NOW A 3 STAGE EVENT***

***refer program for dates & times***

***DON'T DELAY!***

***ORGANISE YOUR JULY HOLIDAY NOW!***

***CHECK THE BAWA WEBSITE FOR ACCOMMODATION & MUCH MORE.....***



# Bridge in the Valley



**Cost per person \$80 all inclusive\***

**\*excludes alcohol & soft drinks which may be purchased on ferry**

**Numbers are limited to 80 bridge players and 20 non-players.**

**There will be a limited number of places available for players eliminated from Butler Stage 1 and these places must be booked by 6.00 pm, Sunday 8<sup>th</sup> July at the Hospitality Desk.**

**All other entries close Monday 2<sup>nd</sup> July 2007 and must be paid in advance.**

**Enter on BAWA website – [www.bawa.asn.au](http://www.bawa.asn.au) OR complete the Entry Form in the ANC Brochure, now available through your club.**

## **Itinerary for Monday 9<sup>th</sup> July 2007**

**8.30 a.m.** Bus leaves Esplanade Hotel, Fremantle for Barrack St Jetty, Perth.  
(Locals may join the ferry at Barrack St. Jetty & must note on entry)

**9.30 a.m.** Ferry departs and bridge session commences. Morning tea & unlimited tea /coffee.

**12.30 p.m.** Ferry arrives at Mulberry on Swan for casual lunch & wine tasting.

**Afternoon bus tour includes visits to:**

**Margaret River Chocolate Company  
Iron Bark Brewery  
Sandalford Wines**

**4.45 p.m.** Buses leave for Esplanade Hotel, Fremantle & Barrack St Jetty.





# ANC 2007 GENEROUSLY SPONSORED BY

The most flexible colour printers

# RICOH

Kimberley Marshall Document & Print Solution Specialist  
Ricoh Business Centre Phone (08) 9262 9000 Fax (08) 9262

## John Hughes

49 Shepperton Road, Victoria Park, ph:(08) 9415 0227  
[www.johnhughes.com.au](http://www.johnhughes.com.au)

## Lindy Rosenwax Collection

31 Hampden Rd, Nedlands 6009 (08) 9386 6866

ESPLANADE  
HOTEL FREMANTLE



Corner Essex & Marine Terrace, Fremantle,  
ph: +618 9432 4000 f:+618 9430 4539  
[www.esplanadehotelfremantle.com.au](http://www.esplanadehotelfremantle.com.au)

## The Bridge Game Shop



Shop 12E Subiaco Village, 531 Hay Street, Subiaco,  
Phone: (08) 93804555 <http://www.thebridgegameshop.com.au/>

## Rejuvenating Special eyes

## Uforic Jewels

## Steele Bishop – Security Systems



## Bedfords Bed & Breakfast

75 Bruce Street, Nedlands  
(08) 9386 1349  
[bedfords@bigpond.net.au](mailto:bedfords@bigpond.net.au)



[www.harbourvillage.property.questwa.com.au](http://www.harbourvillage.property.questwa.com.au)



## Spookwood Winery

Redman Road, Quindanning  
[spookwoodwines@globaldial.com](mailto:spookwoodwines@globaldial.com)

## Myatts Field Winery

Union Road, Carmel, WA

## Sandalford Winery

3210 West Swan Rd, Caversham

## Xanadu Wines

(08) 9757 2581

## Moss Wood Winery

## Margaret River Hemp Company

Market St, Fremantle

## MEAD'S MOSMAN PARK

## WITCH'S CAULDRON SUBIACO



5 Collingwood St, Osborne Park, 94452279  
[www.racketworld.com.au](http://www.racketworld.com.au)



**GOODEARTH HOTEL**  
 195 Adelaide Terrace, Perth

**WEST AUSTRALIAN NEWSPAPERS LTD**

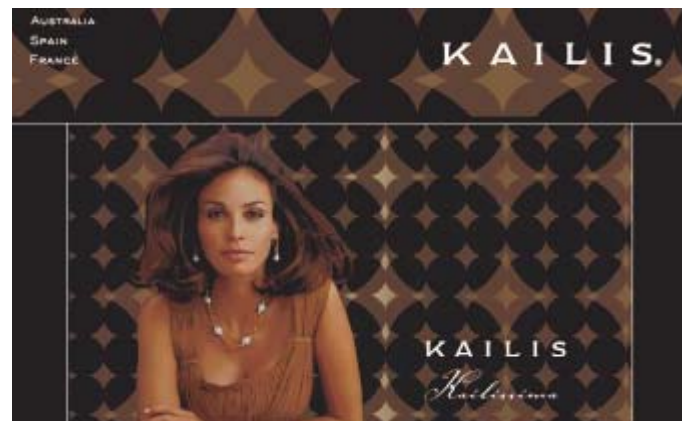
**Susan Clements & Toby Manford**  
**Charlie & Lily Lim**  
**Robin Paterson & Sheenagh Young**  
**Brian O'Hara & Angela Roberts**  
**Les Calcraft**  
**Audrey McCarthy**

**Fawkes House Bed & Breakfast**

**TRADEWINDS HOTEL FREMANTLE**  
**59 CANNING HIGHWAY EAST FREMANTLE**  
 PH: 08 9339 8188  
[www.tradewindshotel.com.au](http://www.tradewindshotel.com.au)



**Moss Wood Winery**  
 Metricup Road, Willyabrup WA Ph: (08) 9755 6266



MG Kailis Group – Pearling Division, Marine Terrace (corner Collie Street), Fremantle ph: 9239 9330  
[www.kailisaustralianpearls.com.au](http://www.kailisaustralianpearls.com.au)



Rebecca Oates Hair  
 Shop 15a, Woolstores Shopping Centre  
 Cantonment St, Fremantle ph: 9336 4451

**Rosendorff's Bridge Centre**

**Cottesloe Blue Seas Executive Apartments**  
 119 South Tce, Fremantle  
[www.cottesloewaters.com](http://www.cottesloewaters.com)

PricewaterhouseCoopers

**Infodata**  
*For software and services to manage information resources in companies and government. Libraries, Records Management, Community Information, Asset Registers, Directories, Real Estate, Art Collections and Museums, etc.*  
 Ph 9389 9558 [indat@ozemail.com.au](mailto:indat@ozemail.com.au)

- Avon Valley Bridge Club
- The West Australian Bridge Club
- Nedlands Bridge Club
- South Perth Bridge Club
- Mandurah Bridge Club
- Bunbury Bridge Club
- Undercroft Bridge Club
- West Coast Bridge Club
- Maccabi Bridge Club
- Fremantle Bridge Club
- Rockingham Bridge Club
- Village Bridge Club
- Maylands Bridge Club
- Dianella Bridge Club
- Esperance Bridge Club
- Bridgetown Bridge Club
- Melville Bridge Club & City of Melville
- Italian Club